

Tri-County Economic Development

Presented by

Arum Kone

Washington State
Employment Security Department

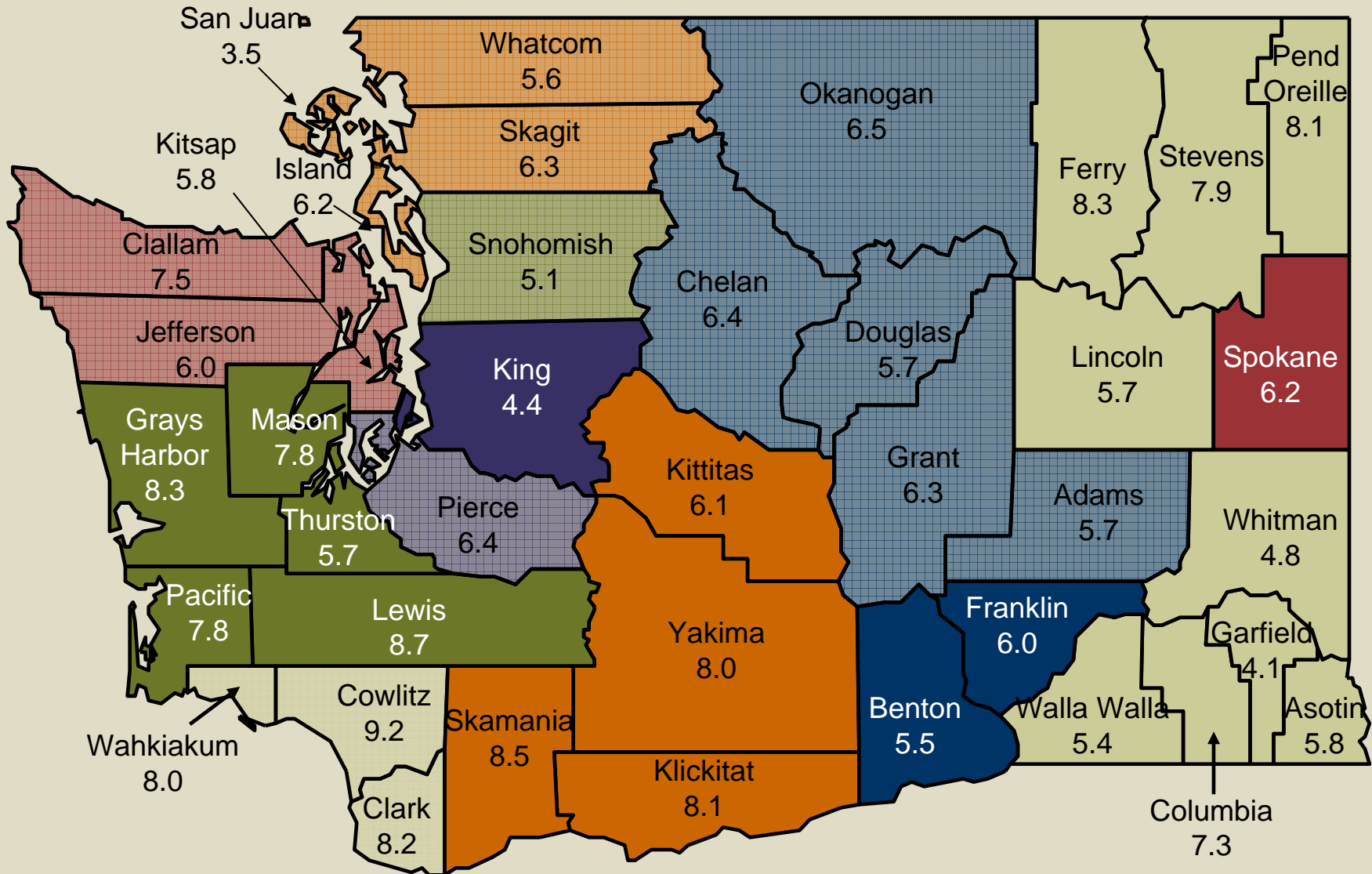
Labor Market and Economic Analysis



Regional Economist

10/08/2008

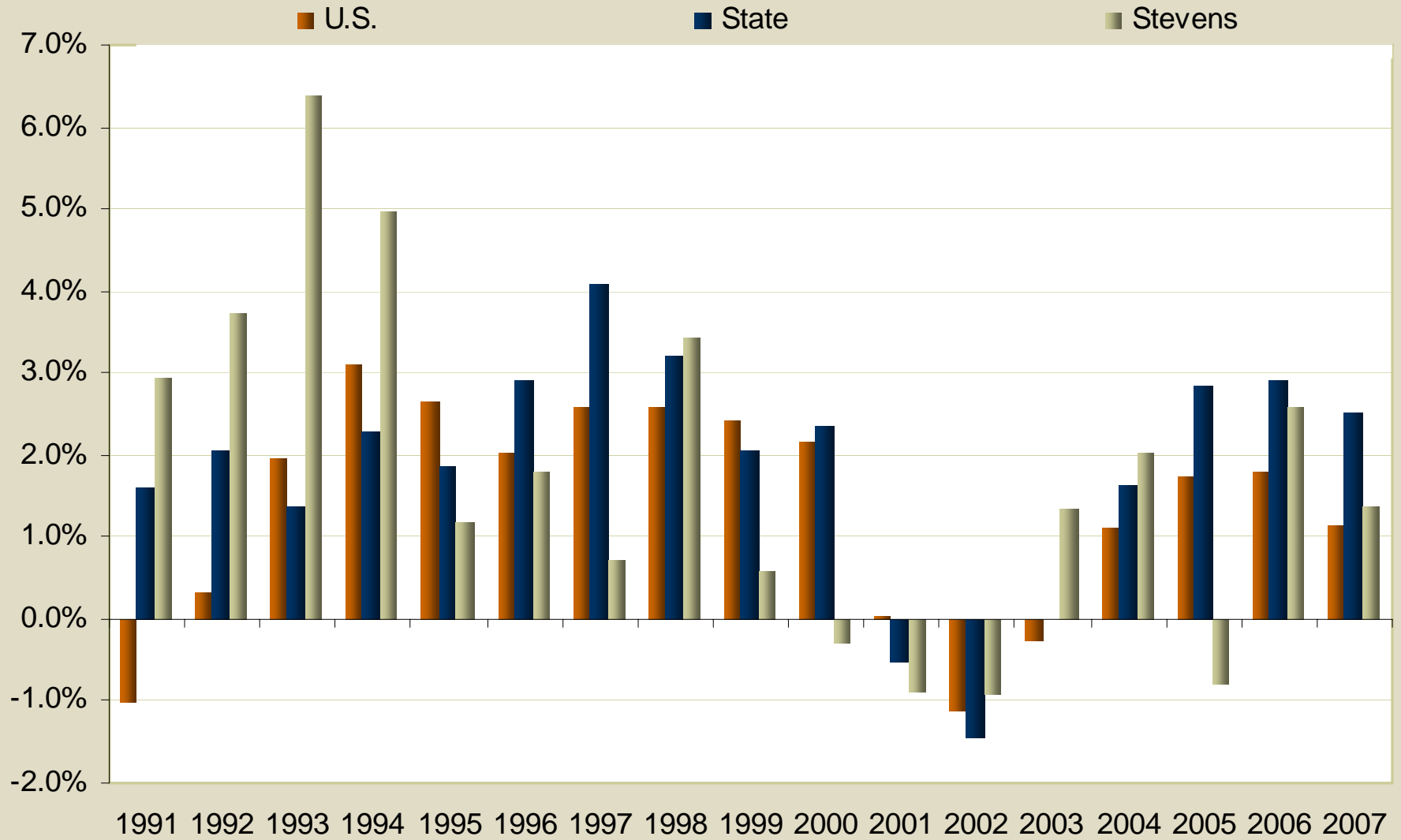
Unemployment Rates August 2008



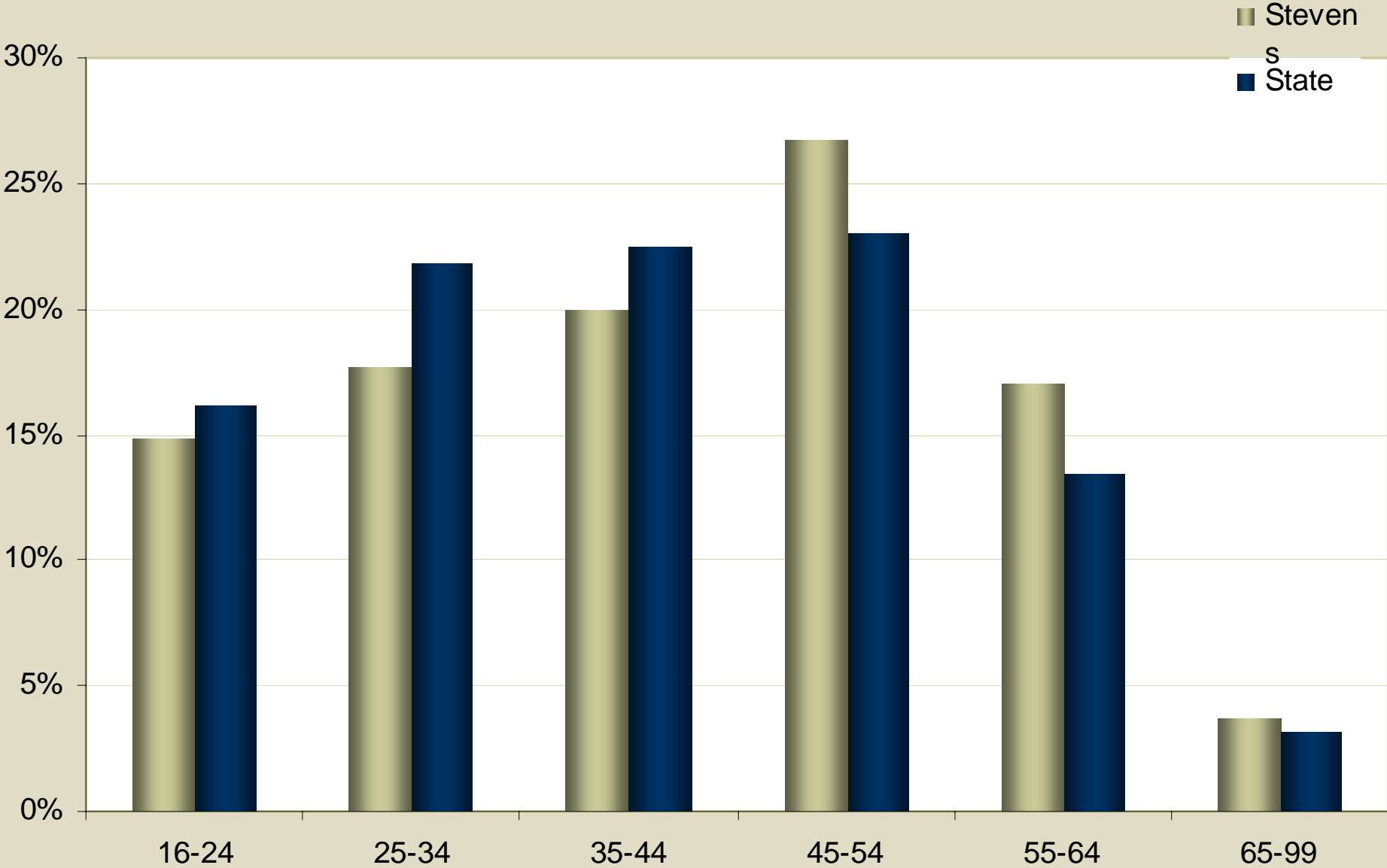
Source: Labor Area Unemployment Statistics (LAUS)



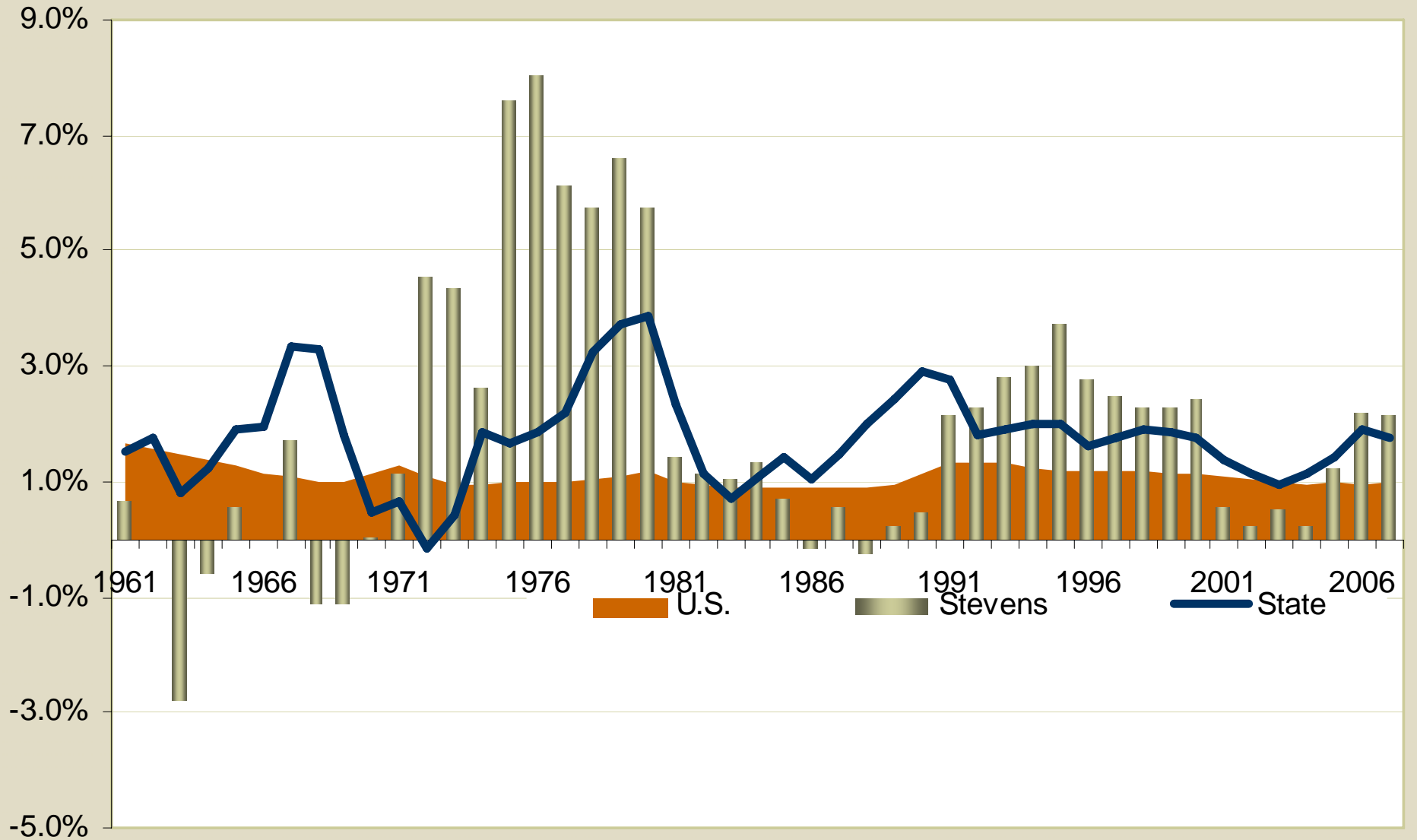
Annual Growth in Nonfarm Employment, 1991-2007



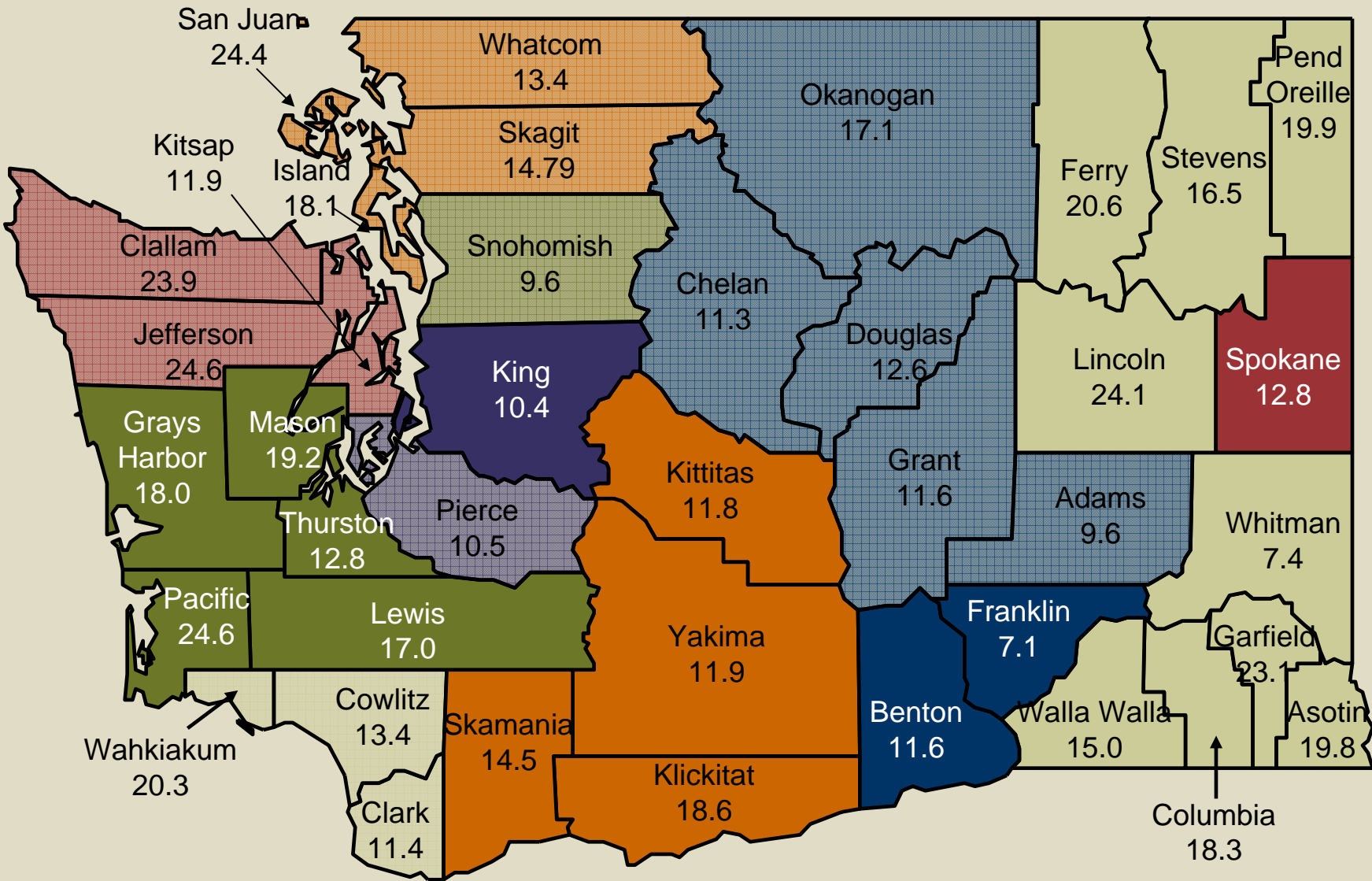
Percent of Jobs by Age of Jobholder, 3rd Quarter 2007



Annual Population Growth, 1961 - 2007



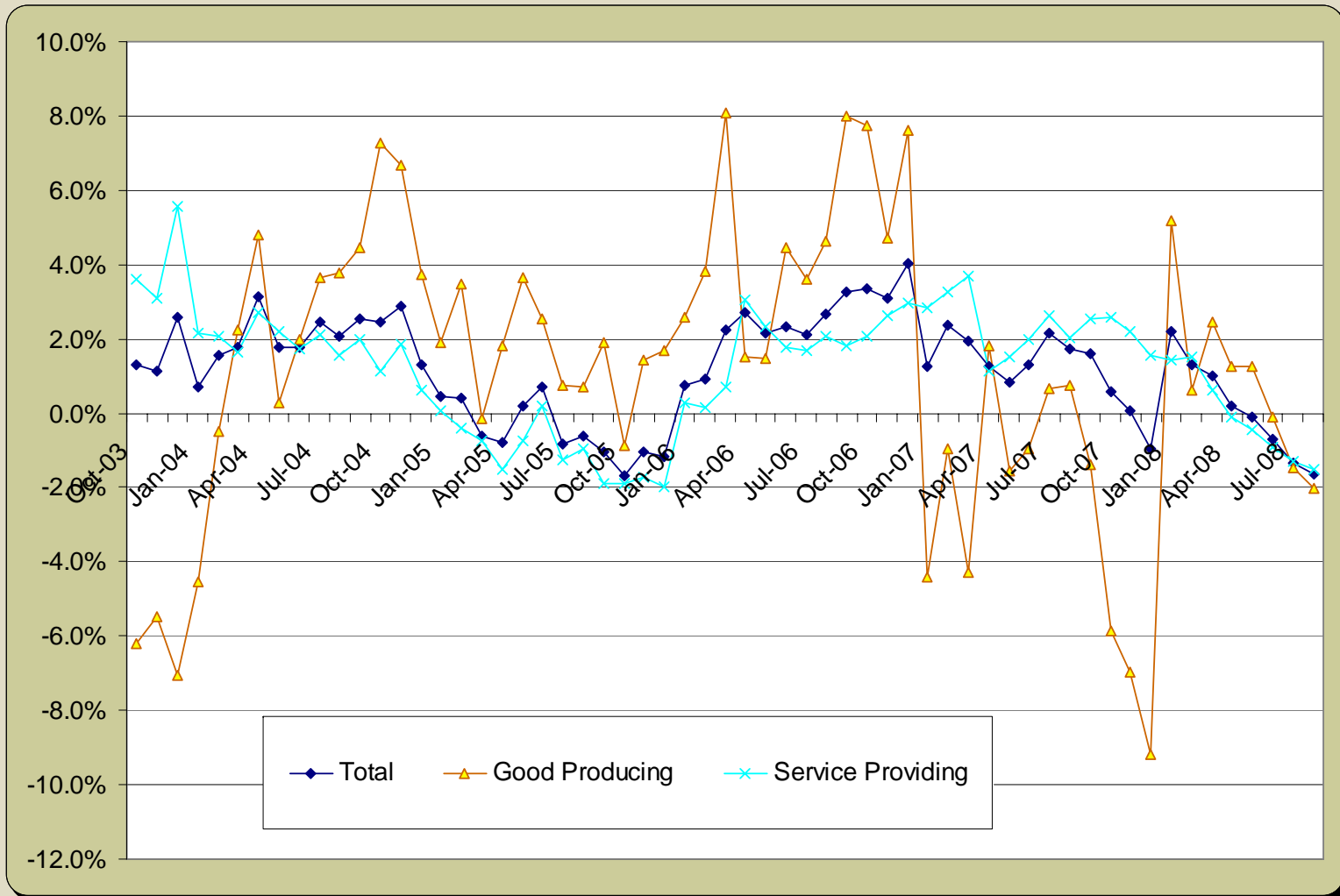
Percent of 2008 County Population Age 65 and Over



Source: Labor Area Unemployment Statistics (LAUS)



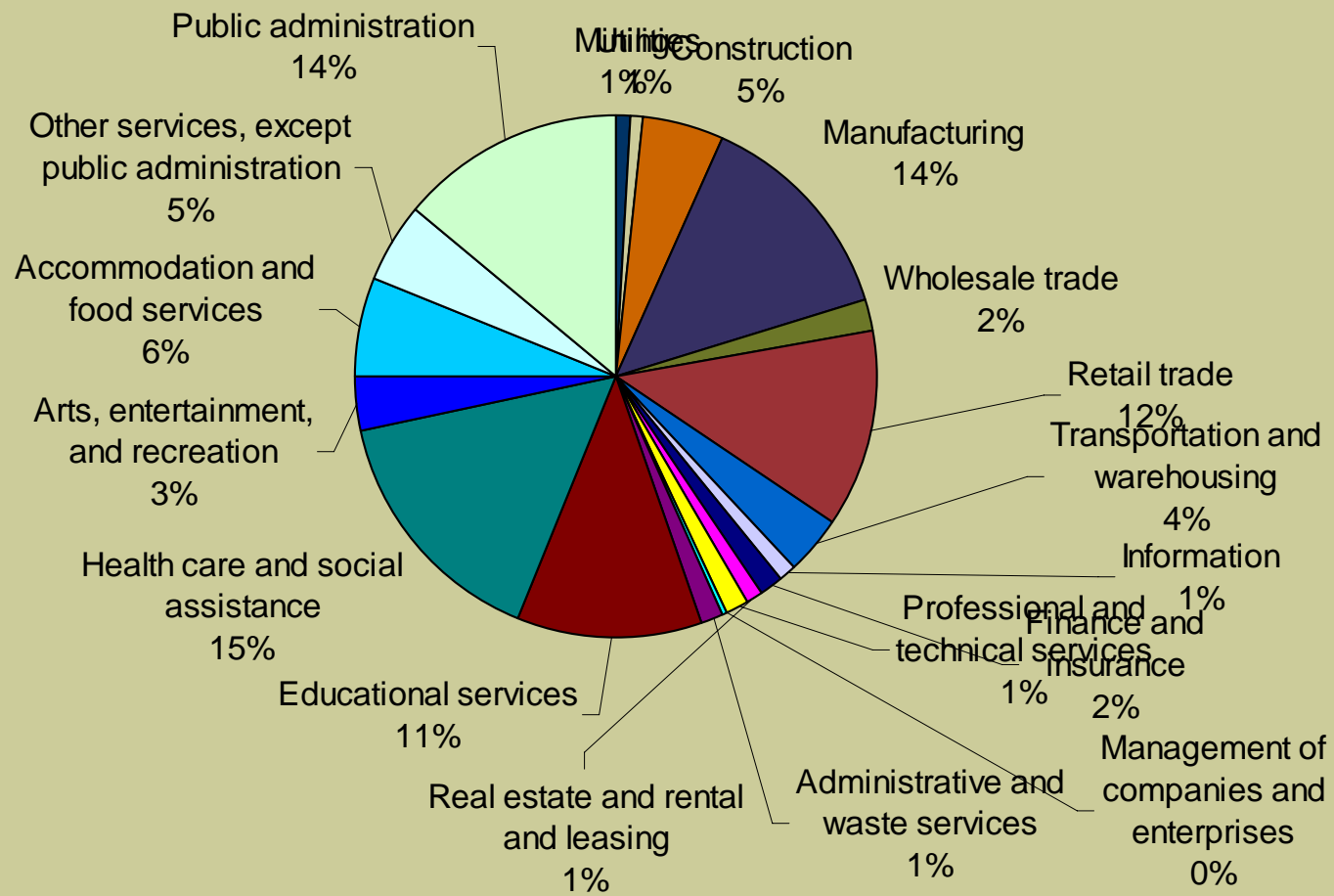
Annual Employment changes



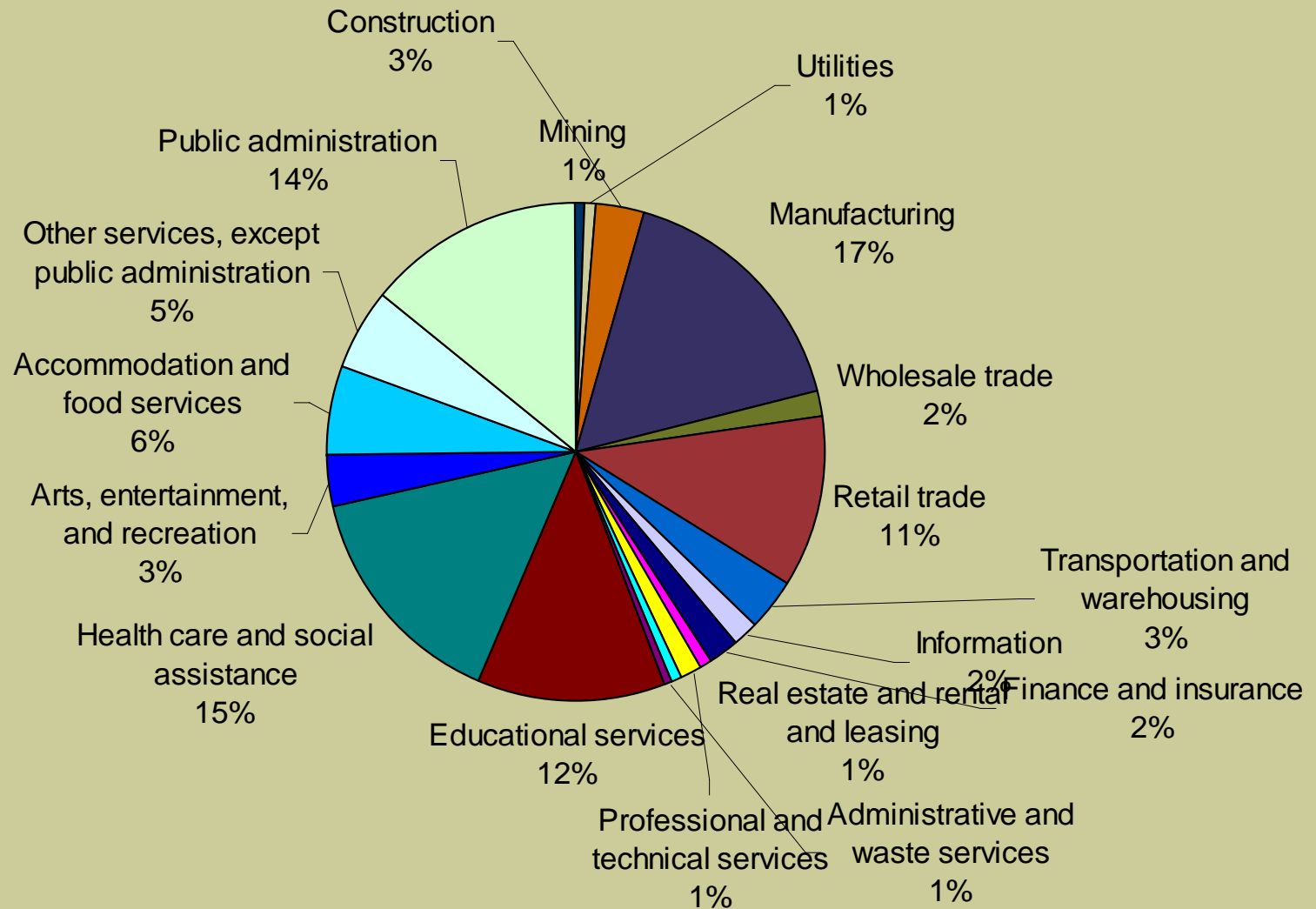
Source: Current Employment Statistics (CES)



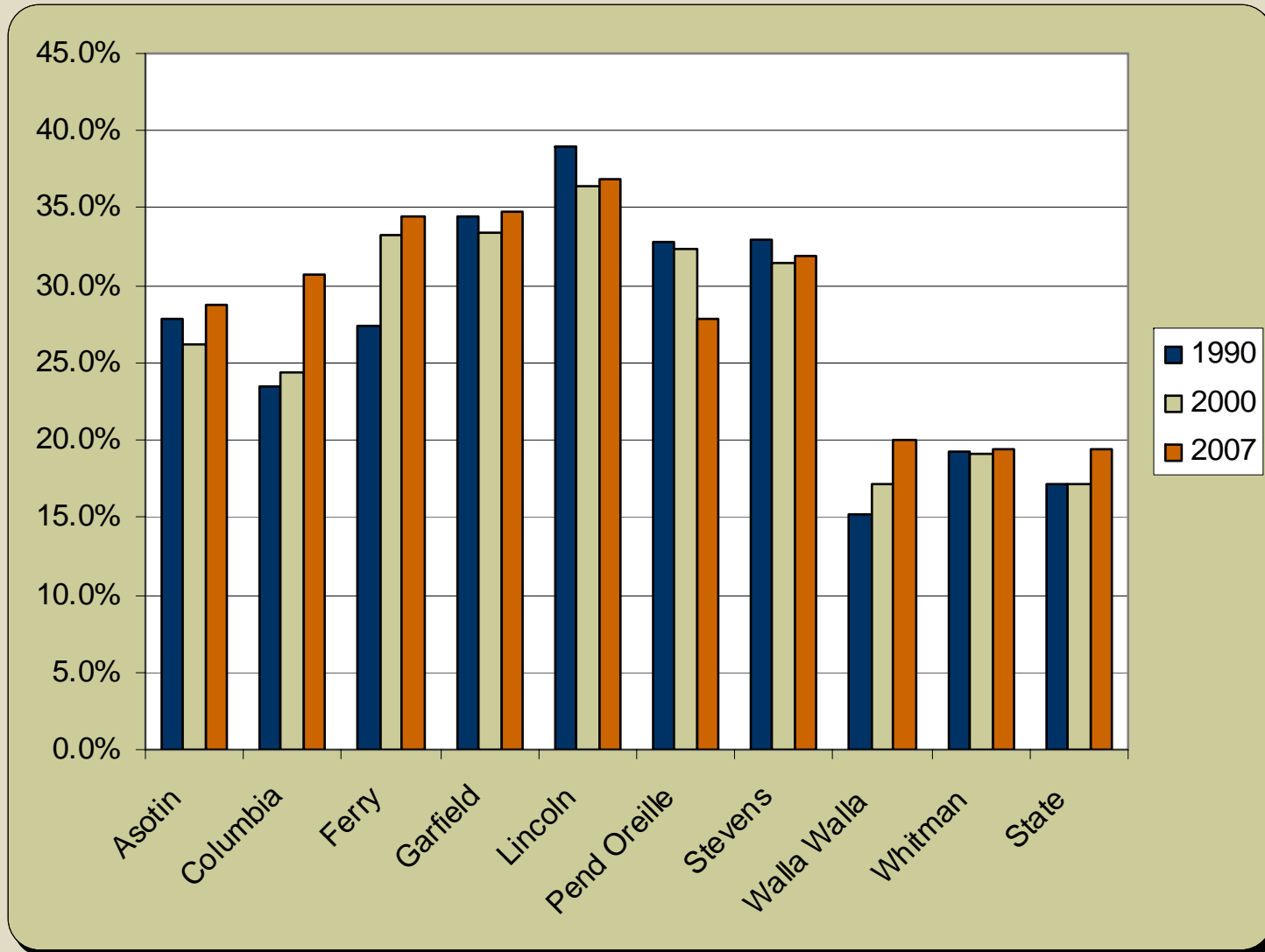
Industry Employment 2007



Industry Employment 2002



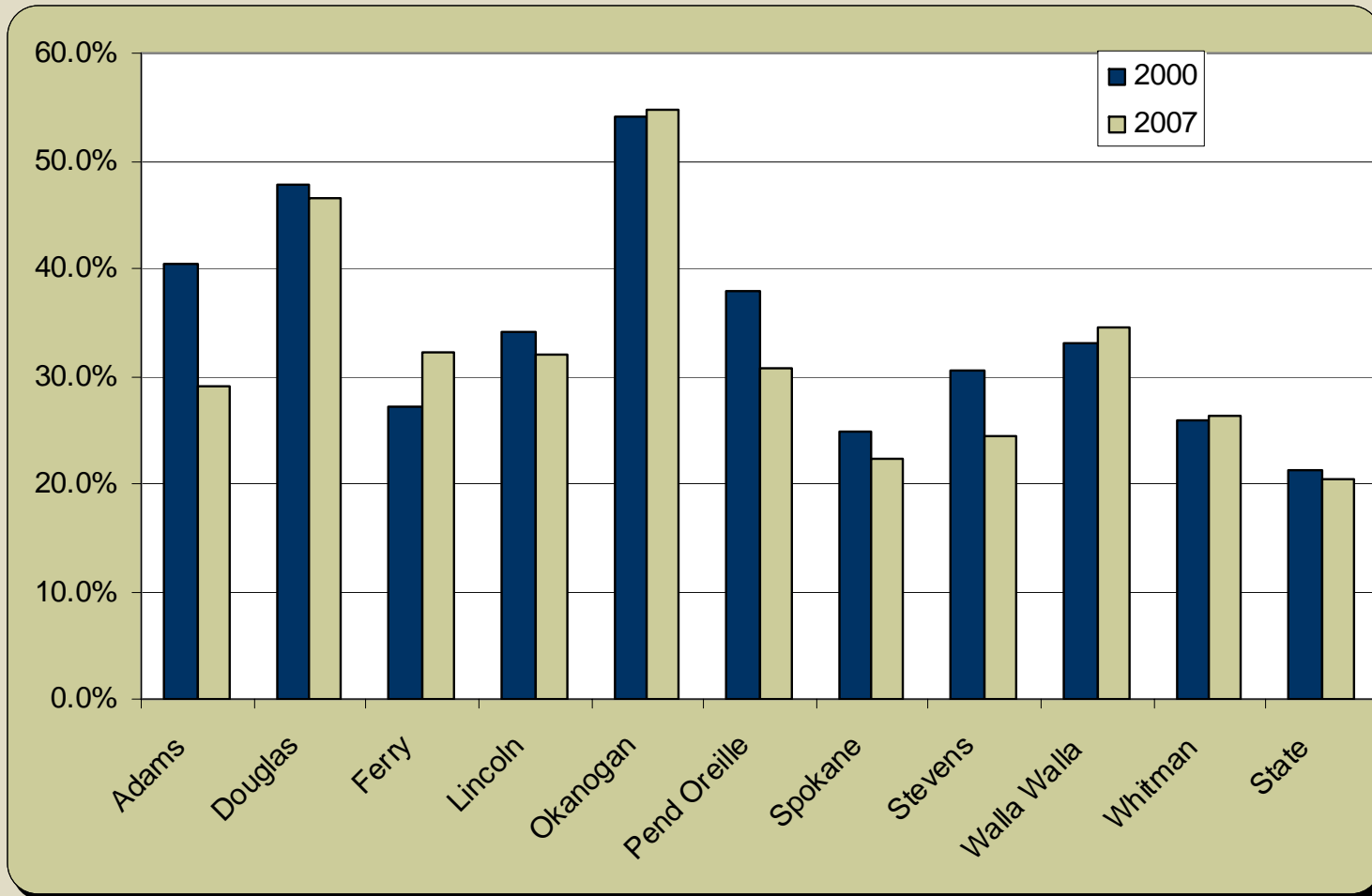
Self Employment as percentage of Total Employment



Source: Bureau of Economic Analysis



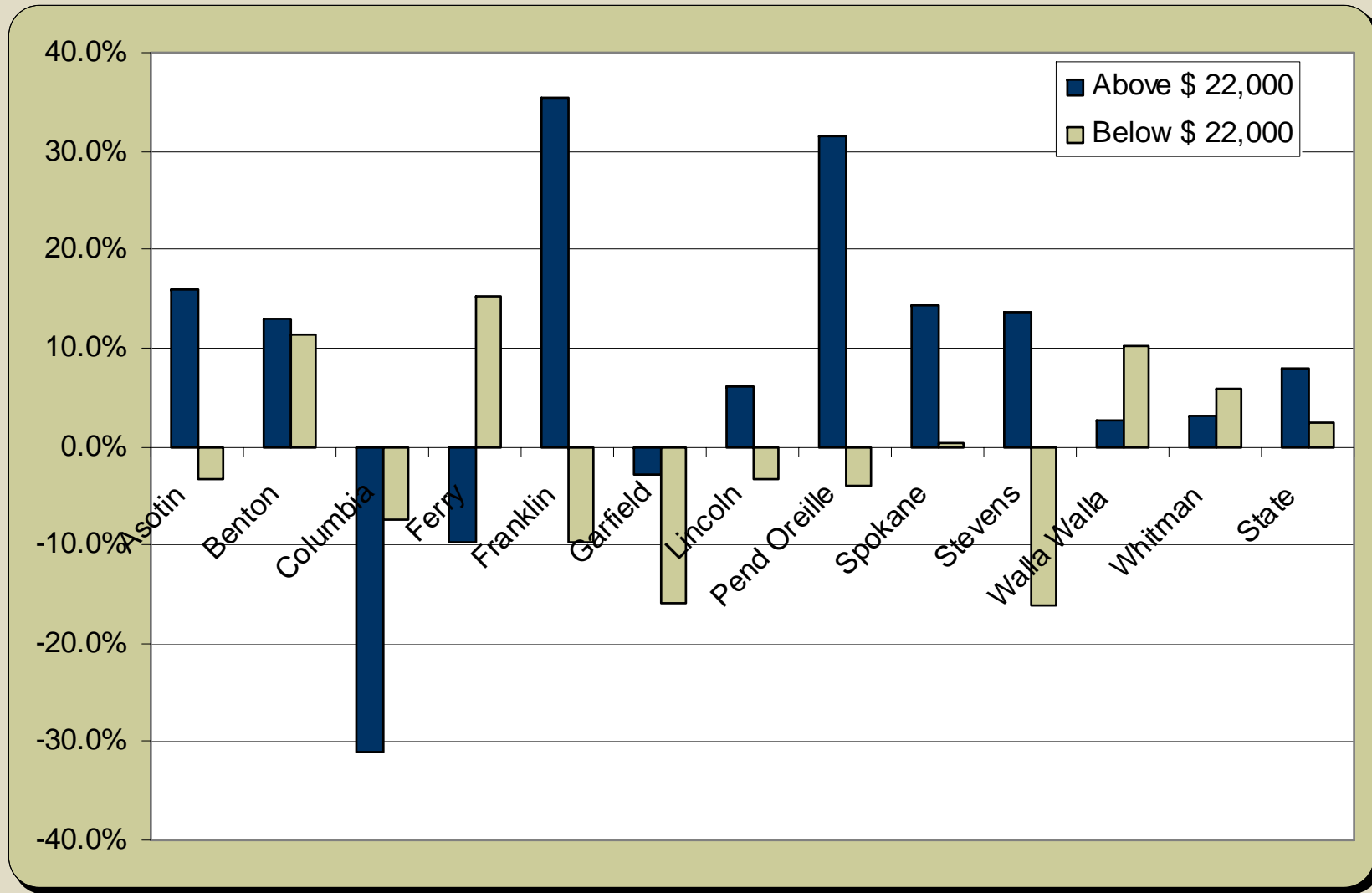
Annual Average Wage below \$22,000 as Percent of Total Employment (Inflation Adjusted)



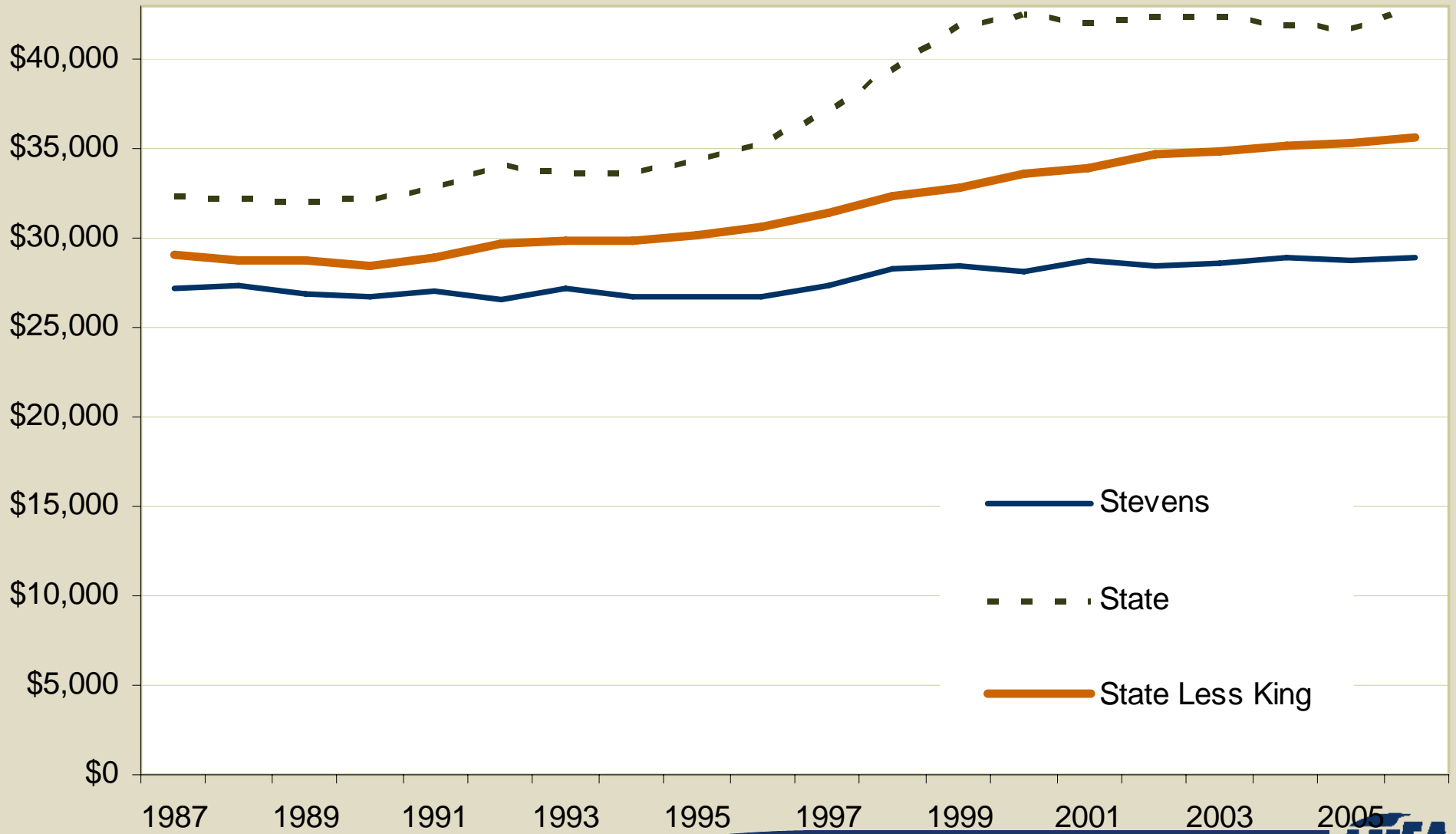
Source: Quarterly Census of Employment and Wages (QCEW)



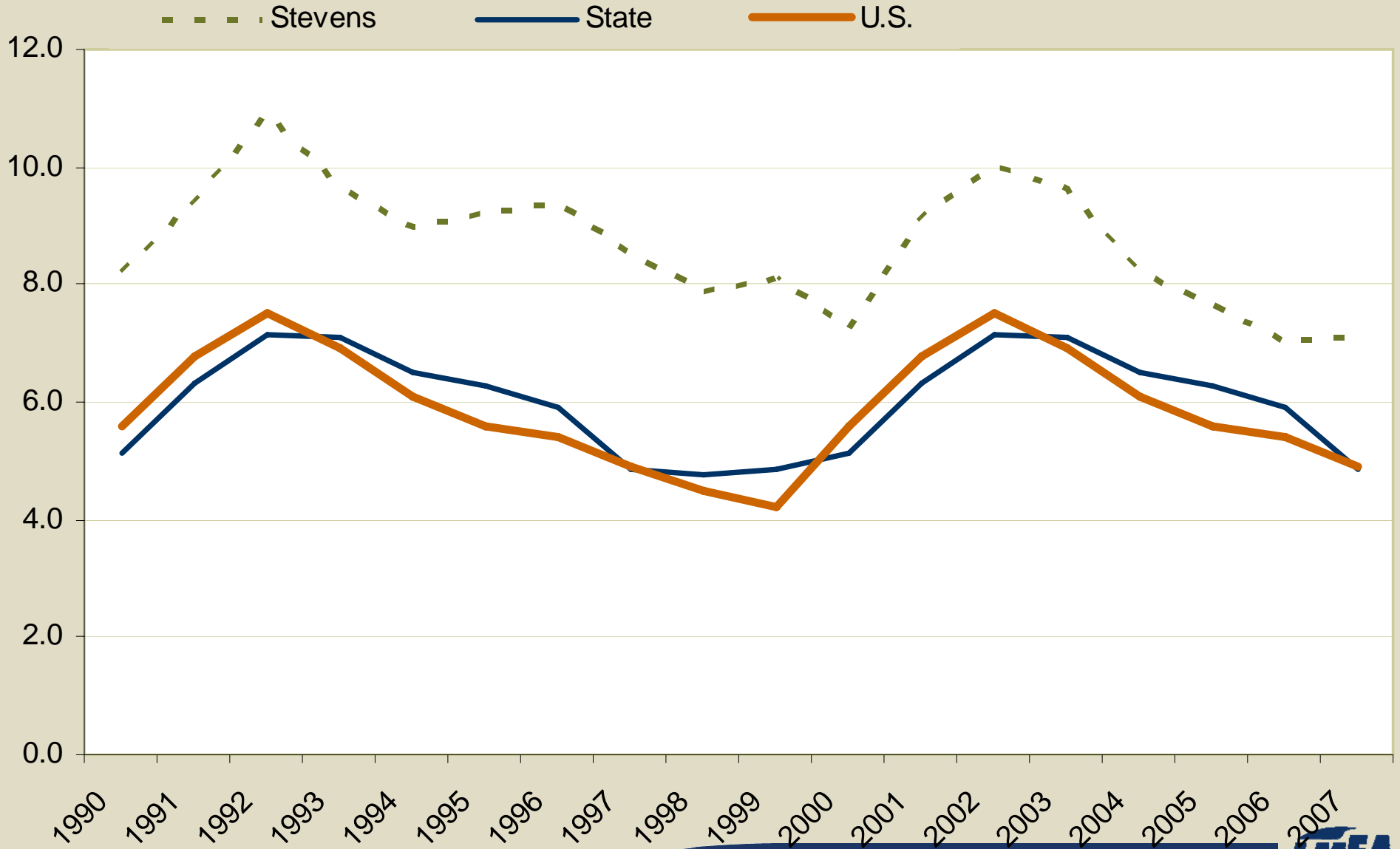
Job Growth 2000 - 2007



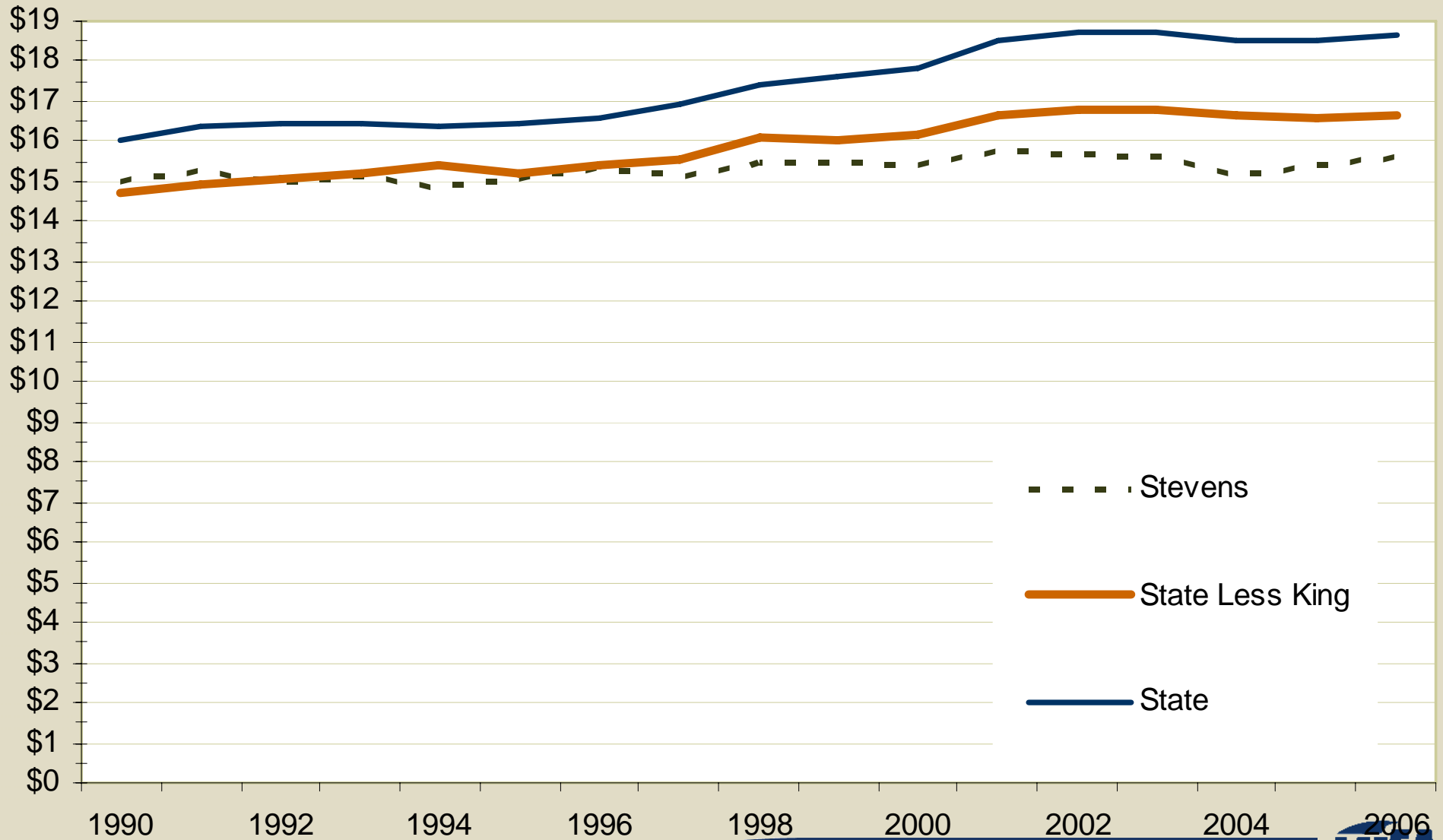
Average Annual Wage, Adjusted for Inflation



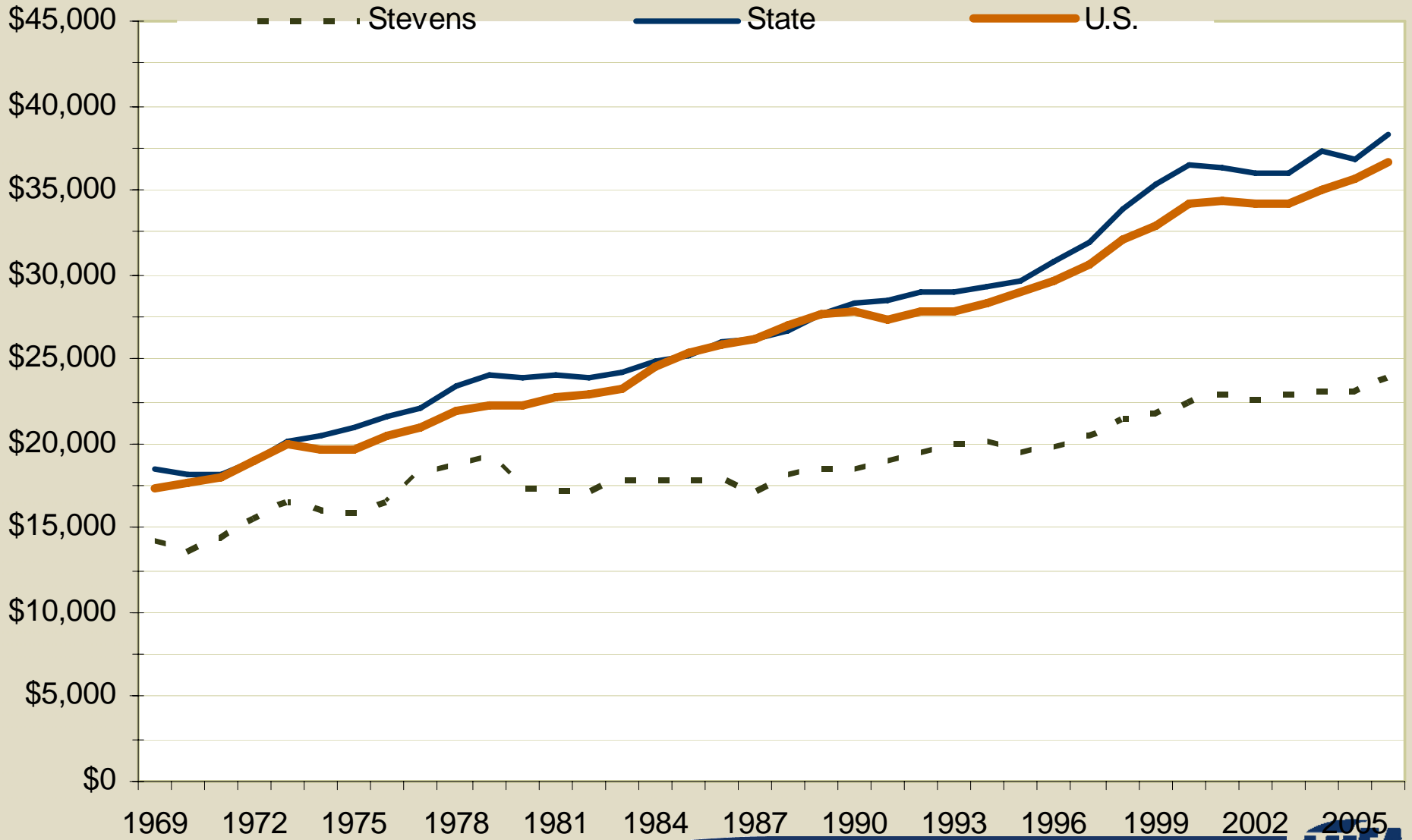
Annual Unemployment Rates, 1990 - 2007



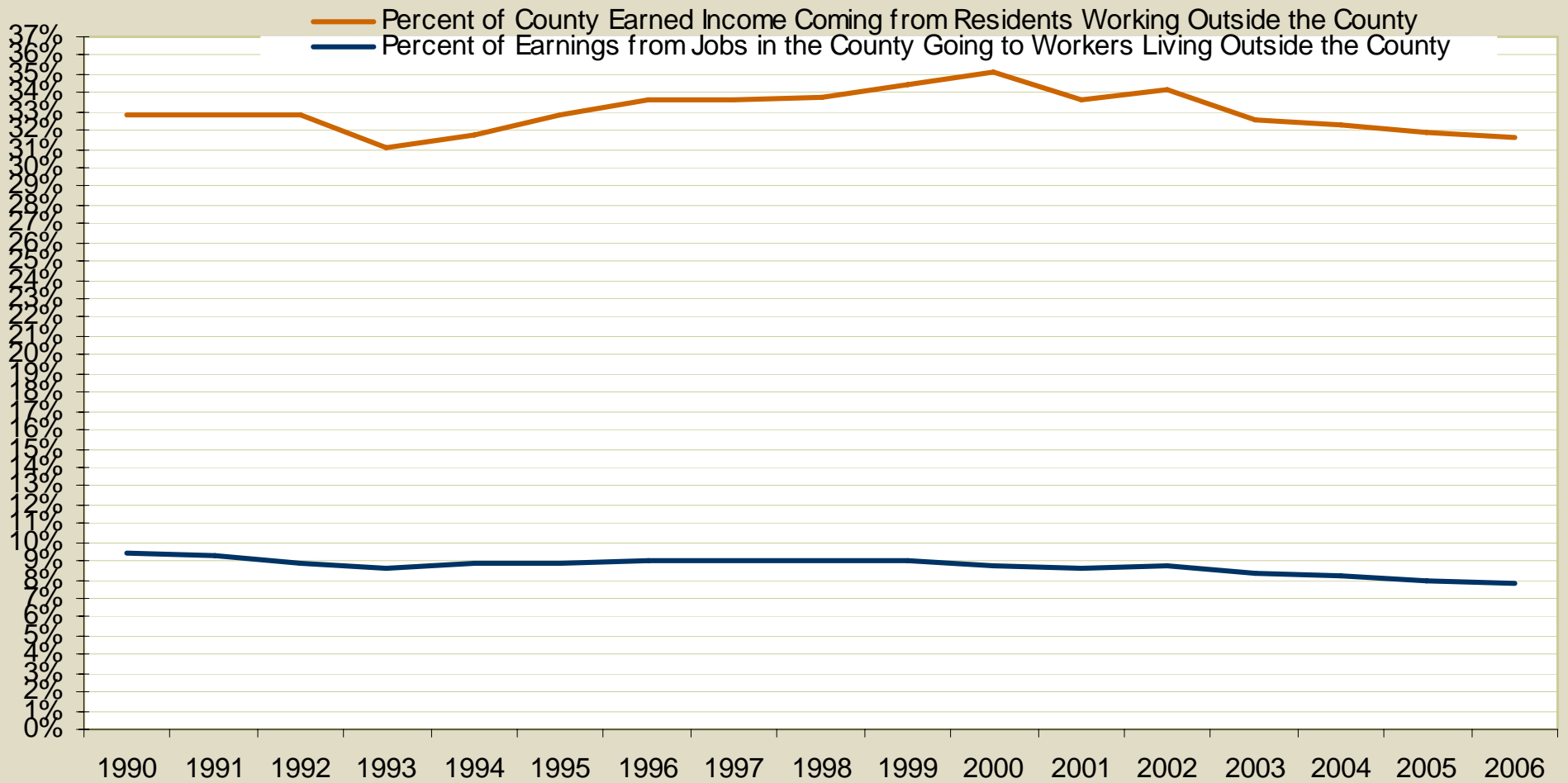
Median Hourly Wage, Adjusted for Inflation



Inflation-Adjusted Per Capita Income



Inflation-Adjusted Earnings Flows from Cross-County Commuters



Annual Housing Permits, Stevens County

